



# PROBUS NEWS

Women's Probud Club of  
Cambridge Riverside

Editor: Germaine Glaves

Club's designated Email address: CambridgeRiversideProbud170@gmail.com

Vol. 15 Issue 6 February 2019

## MANAGEMENT TEAM 2018-2019

President	Barb Camilleri
President-Elect	Alison Sanders
Past President	Evelyn Sullivan
Treasurer	Jennifer Ghent-Fuller
Secretary/Communications	Aline Chan
Program Co-Chairs	Jan Woyrnarski/Lyn Pinnington
Membership Chair	Anne Cher
Travel Chair	Lynda Berg
Newsletter Editor	Germaine Glaves
Special Events Co-Chairs	Moraig Waite/Karen Barber
Public Relations	Linda Sims
Facility	Kriss Gandier

*Meeting is 2<sup>nd</sup>  
Wednesday of  
each month at  
9:30 am*

*Next Meeting  
February 13<sup>th</sup>  
Sunbridge Hotel*



### *A MESSAGE FROM THE PRESIDENT*

After a careful review, the Management Team has decided that we will remain at Sunbridge until we are advised of a date for construction to begin and we will be required to vacate. We do not know if this will take place in 2019 or in a future year and we find that Sunbridge accommodates us very well. Let's hope we have many more years in this location!

#### LEADERSHIP OPPORTUNITY

We are looking for someone who might be interested in the position of President Elect next year. Should you choose to accept this opportunity, you will spend one year learning to be a part of the Management Committee and prepare for becoming President the following year. In your third year you assist in filling any management positions that become vacant. This is a three year commitment and it is a great way to use your leadership skills. You will be part of an amazing dedicated team of people who make our Probud club so successful. We would love to answer any questions you might have.

Sincerely,

**Your Nominating Committee**



# INTRODUCING

## OUR FIRST ANNUAL MEMBERS' DAY

Our First annual **Members' Day** will be on February 13. At that time we will be able to view and experience the creativity and accomplishments of the following: Marilyn Armstrong, June Ayrhart, April Bulmer, June Bulmer, Kriss Gandier, Jennifer Ghent Fuller, Linda Meyette, Alison Sanders, Evelyn Sullivan, Noreen Mikelsons, MaryJane Novak, Donnamae Fleet, and Anne Snyder. Our very own **Sharps and Flats** will add their voices to the day so we can enjoy their talents as well! Big Reveal after break.

## JANUARY'S PROBIAN PROFILE

### Lorna Renwick

Lorna has been a Probian since it's inception in 2003. She has served as President, Past President, Management Team and Program Committee Member and Nominating Committee. She has lived in Cambridge her entire life. Lorna has a daughter and two sons. She has worked at Galt Collegiate, Bank of Montreal and Cambridge Memorial Hospital. She sang in a quartet with her three sisters, Carol, Gail and Joanne performing in churches and retirement/nursing homes in Cambridge and surrounding areas.

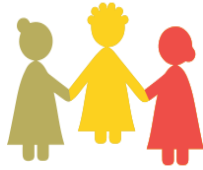


The **walking group** went out to Easy Pour for a New Year's celebration after their first hike of 2019.



## Greeters

February's greeters will be **Anne Snyder** and **Jan Sparrow**



## *Mystery Woman*

**Merrily Walker** was January's Mystery Woman.

Congratulations

**Merrily**



## *Thinking of You Cards*

If you know of a Probus member in need of a card, please contact

**Marg DeBrusk.**



## *Bridge Group*

A bridge player is needed for our newest group of 8 which meets on the 4<sup>th</sup> Thursday. Please contact **Joan Fairley**



If you are planning to stay for lunch at the **Sunbridge Hotel** please make reservations no later than 10:30 the morning of the meeting.

**Phone 519-658-4601** or in person.



## **Book Table**

Due to the Probus Members' Day there will **not** be a table at February's meeting.



## *Purls Craft Group*

**Change of Venue!** The Purls are now meeting in the **Fabric Arts Studio, floor 2A, Cambridge Centre for the Arts** on the first Thursday 10:30-12. Contact **Dot MacMillan** for more information.

## **COM CATS—Making a Photo Book**

Wednesdays in March  
12:30-2pm

Queen's Square Terrace

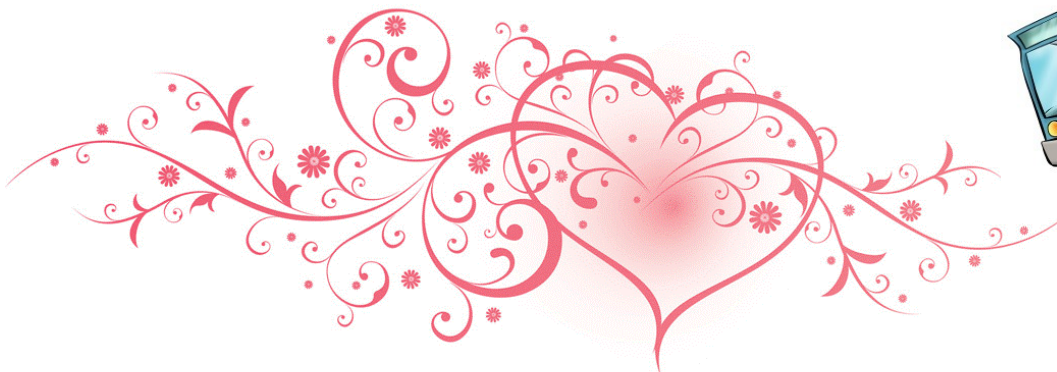
Email **June Ayrhart** for full details and check flyer on bulletin board at Probus meeting.



**HURRAH.....**For those interested in **BOARD GAMES**, **Ethel Craig** has volunteered to start a new group! If this item is of interest to you, please join Ethel after the regular meeting near the podium. Ethel needs to know how to organize this group (in a central location or organized as bridge in each other's homes; either afternoon or evening; which board games; and other queries you may have)

## Travel Adventures

May 1	Beautiful—The Carol King Story	\$219
May 29—31	Thousand Islands, Kingston	Twin \$795
June 13	Port Dover Lighthouse Theatre	\$159





# Probus Special Interest Groups



COMMITTEE	CONTACT	MEETING TIME
Travel	Lynda Berg	<i>Third Wednesday at Lynda's home</i>
Book Club #1	Marg Johnstone	<i>Fourth Thursday, Donaldson Room, Centre for the Arts</i>
Book Club #2	Linda Meyette	<i>Fourth Wednesday, 1 pm, rotating members' homes</i>
Book Exchange	Diane Day/Cathy Coyle	<i>Table at every Probus meeting</i>
Bridge #1	Joan Fairley	<i>First Thursday, 1 pm, rotating members' homes</i>
Bridge #2	Joan Fairley	<i>Second Tuesday, 1 pm, rotating members' homes.</i>
Bridge #3	Joan Fairley	<i>Third Friday, 1 pm, rotating members' homes</i>
Bridge #4	Joan Fairley	<i>Third Thursday, 1 pm, rotating members' homes</i>
Bridge #5	Joan Fairley	<i>Fourth Thursday, 1 pm, rotating members' homes</i>
Euchre	Dianne Kroeger	<i>Every Monday, rotating members' homes.</i>
Sharps & Flats	Marg DeBrusk	<i>First Wednesday, 12:00 pm, Galtview Restaurant</i>
Walking Club	Merrily Walker	<i>Every Monday 9:30 am, local trail hike followed by coffee.</i> <i>Location TBA</i>
Lunch Bunch	Julia Boyd	<i>Third Thursday, 12:30-2:30 pm, various locations, sign up at meeting</i>
Computer Club	June Ayhart	<i>March Wednesday 12:30-2 Queen's Square Terrace</i>
Purls Craft Group	Dot MacMillan	<i>First Thursday, 10:30-12, Fabric Arts Studio Floor 2A, Centre for the Arts</i>
Greeters	Linda Sims	<i>Volunteers welcome</i>

## From the Membership Chair

I need a helper with the name tags at the membership table. The helper would help locate name tags for members arriving. If you are interested, please contact **Anne Cher**. I look forward to a new helper.

## INCLEMENT WEATHER

In the event that a Probus meeting is cancelled due to weather conditions, an email will be sent out to all Probi-ans on the membership list by **7:00 am the morning of the meeting.** If you do not have email, please ensure that you buddy up with someone who does.



Mystery Woman, Travel and Lunch Bunch will be located at the Membership Table For February's meeting.

